

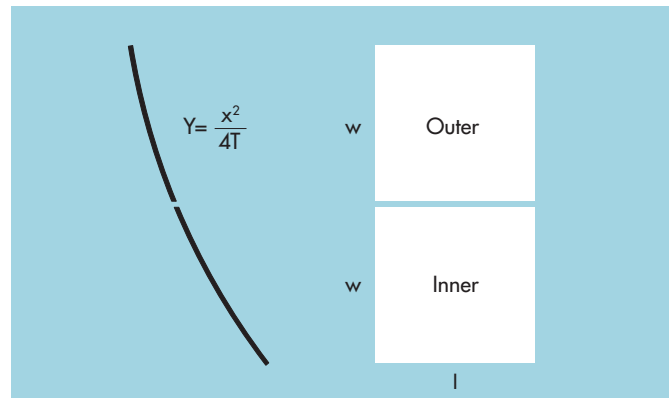


## Solar Mirrors for Concentrating Solar Power (CSP)

This product information is related to the FLABEG specification for solar mirrors (Date: July 2009)

### Available Mirrors

Type		Dimensions l x w (mm)
RP 2 T=1490 mm	Inner	1570 <sup>+3</sup> <sub>-1</sub> x 1400 <sup>+1</sup> <sub>-1</sub>
	Outer	1570 <sup>+3</sup> <sub>-1</sub> x 1324 <sup>+1</sup> <sub>-1</sub>
RP 3 L T=1710 mm	Inner	1700 <sup>+3</sup> <sub>-1</sub> x 1641 <sup>+1</sup> <sub>-1</sub>
	Outer	1700 <sup>+3</sup> <sub>-1</sub> x 1568 <sup>+4</sup> <sub>-2</sub>
RP 4 T=1710 mm	Inner	1570 <sup>+3</sup> <sub>-1</sub> x 1900 <sup>+2</sup> <sub>-2</sub>
	Outer	1570 <sup>+3</sup> <sub>-1</sub> x 1900 <sup>+2</sup> <sub>-2</sub>



### Glass Quality

Low iron float glass according to EN 572-2

### Reflection according to ISO 9050

Type	Thickness	Reflection %	Weight (kg) Inner/Outer
RP 2	4 mm	≥ 93.5	22/21
	5 mm	≥ 92.5	28/26
RP 3 L	4 mm	≥ 93.5	28/27
	5 mm	≥ 92.5	35/33
RP 4	4 mm	≥ 93.5	30/30
	5 mm	≥ 92.5	37/37

### Mirror Coating System

Layer System: Ag / Cu / low Pb protective lacquers/lead-free top coat

### Durability of silver coating system

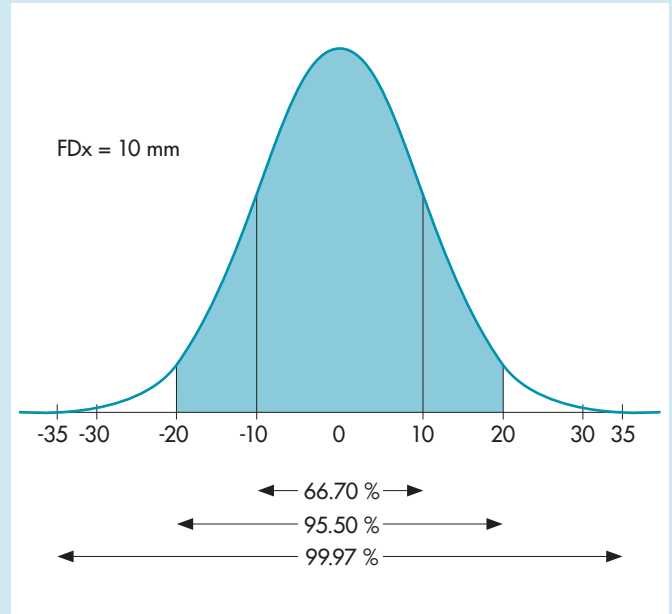
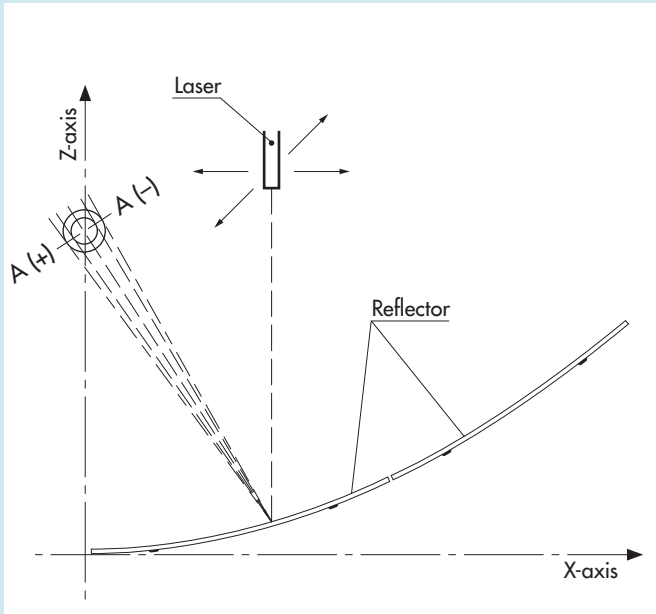
Resistance to humidity as per DIN EN ISO 6720-2 CH: 480 h  
 Resistance to salt spray test DIN EN ISO 9227 NSS: 480 h  
 Resistance to CASS test DIN EN ISO 9227 CASS: 120 h  
 Stability in climatic cycling test DIN EN ISO 6270-2 CH\*: 10 cycles

### Visual Characteristics

Total visual defects effecting the performance: ≤ 0.01 %  
 Corners on mirror may be rounded to radius of max. 20 mm

## Precision of curvature

Measurement and evaluation:	by laser beam
Distance between measurement points:	50 mm
Edge exclusion:	20 mm
Total measure points:	> 388 per m <sup>2</sup>
Focus Standard Deviation (RP 3):	FDx ≤ 10mm ≥ 95,5 % of reflected beams hit 40 mm Target (2σ) ≥ 99,7 % of reflected beams hit 60 mm Target (3σ)



## Mounting Elements

Minimum 4 ceramic elements fixed with suitable adhesive (FLABEG SKS 06) to the back of the mirror. Tensile strength for each ceramic element perpendicular to mirror surface: 2000N\*\*  
 Metal thread: M6 x 6

## Labeling

Each reflector may have a FLABEG label on rear side.  
 Size approx. (50 x 20) mm<sup>2</sup>

## Packaging

Packaging is suitable for sea container shipments. Other packaging for individual shipment is available upon request. Packaging is not suitable for outdoor storage.

Type	Thickness	Amount (pcs./box)
RP 2	4 mm	50
	5 mm	48
RP 3 L	4 mm	50
	5 mm	48
RP 4	4 mm	49
	5 mm	47

\* 4h @ 90°C; 4h@-40°C; 16h DIN ISO 6270-2 CH

\*\* Measured as per FLABEG's tensile strength test

## CONTACT & INFORMATION

### Sales office Europe

**FLABEG® Holding GmbH**  
 Waldastraße 13  
 90441 Nürnberg  
 Germany  
 Tel. +49 911 96456-245

### Sales office USA

**FLABEG® Solar U.S. Corporation**  
 Foster Plaza 5  
 651 Holiday Drive, Suite 300  
 Pittsburgh, PA 15220  
 USA  
 Phone +1 (412) 928-4984